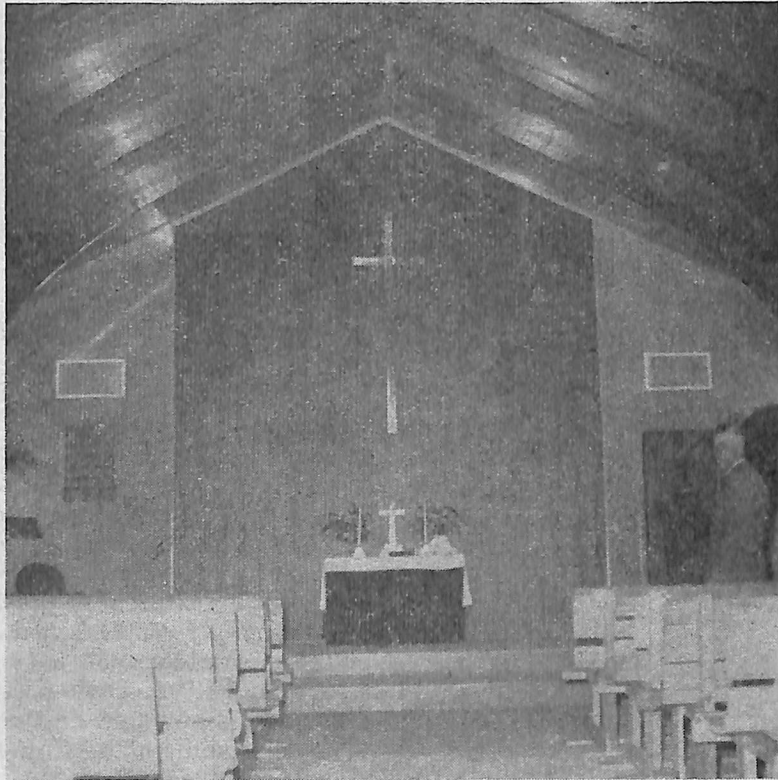


Lutheran Tidings

PUBLISHED BY THE AMERICAN EVANGELICAL LUTHERAN CHURCH



Pictured above is the interior of the new church of Zion Lutheran congregation, of Canwood, Saskatchewan, Canada.
(Story on Page 2)

All Is In Our Father's Hands

All is in our Father's hands,
Spirit led as love demands.

To the glory of the Father
By His grace we gladly gather
In the name of Christ, our Lord.

Rest, O Man, for Hope is won,
Freely given in His son.

To the glory of the Father
By His grace we gladly gather
In the name of Christ, our Lord.

Shared with Him is Life and Light,
Peace and glory, pow'r and might.

To the glory of the Father
By His grace we gladly gather
In the name of Christ, our Lord.

N. F. S. Grundtvig.

(New English version by Saralice Petersen)

New Church in Canada Dedicated

Zenia Skafte



ZION LUTHERAN CHURCH of Canwood was the scene of a festive Service of Thanksgiving when Rev. F. Penner dedicated the beautiful sanctuary. A large crowd filled the nicely decorated Church to capacity after witnessing the presentation of the keys with Mr. Ole Christensen as speaker for the congregation.

The dedication sermon was preached by Rev. A. Goos of Saskatoon, assistant to the President of the Synod of Western Canada, ULCA. He congratulated the congregation for the true Christian Spirit and zeal with which the building program succeeded so admirably.

Six new members were received into the congregation by confirmation which was followed by the celebration of Holy Communion.

The building is 30 feet by 60 feet long, set on a cement slab. Framework consist of 16 fir parabolic arches with straight walls 10 feet in height and a straight roof line. It is well insulated; outside walls covered with shiplap and asbestos siding; roof has asphalt shingles. There are three main windows on each side of sanctuary and one large window with coloured glasses extending to the roof line over the

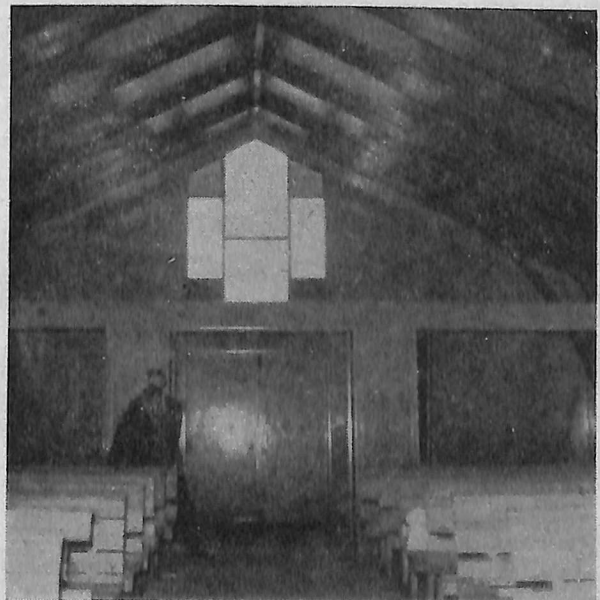
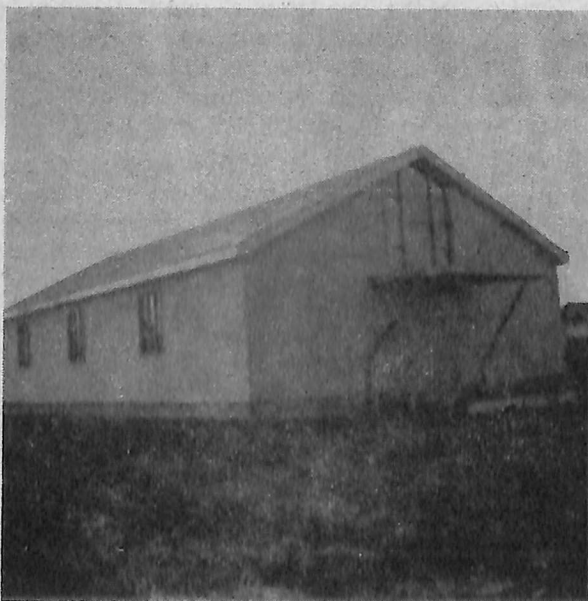
main entrance. The east wall features a big cross made of glass blocks.

Floor plan specifies a church hall behind altar wall 10 feet by 30 feet. Seating capacity in church 112. Sunday school facilities in two rooms 10 feet by 10 feet on each side of 10-foot entrance. These two rooms have folding walls and can be used for overflow seating. The ceiling interior is covered with fir plywood leaving the arches exposed. These are stained mahogany red. The walls are also covered with fir plywood and the ceilings are blonded. The altar wall features a middle section covered with mahogany plywood stained the same color as arches, and the side sections covered with fir plywood are also blonded. A copper cross hangs in the middle. The altar is elevated on two levels and in plain view from any point in the Church. The Church is heated by an oil furnace.

We still have a lot of work to do. We hope to get a tower on and also floor covering, and landscaping done this summer.

A good carpenter and lots of volunteer helpers built this Church and I must not forget the ladies, members of our Ladies' Aid, who so kindly donated

(Continued on Page 14)



That They May All Be One

Dr. Jens C. Kjaer

John 17



THE NIGHT BEFORE Christ went to Golgotha he gathered his men in the Upper Room. There — within a few hours of the Cross — he instituted the Holy Sacrament of the Altar. Then, when Judas had gone out into the night to betray him, he uttered the High-priestly Prayer, recorded in the 17th chapter of the Gospel according to John. Please read it.

As we read and meditate upon this deeply moving and nearly unfathomable prayer, we hear our Lord pray for himself, pray for his disciples and pray for us and all Christians throughout the ages.

In the prayer for himself he does not ask to be excused from the humiliation and the agony of the Cross. He has already accepted it as essential to the plan of salvation. He is ready and prays: "Father, the hour has come; glorify thy Son that the Son may glorify thee, since thou hast given him power over all flesh, to give eternal life to all whom thou hast given him. And this is eternal life, that they may know thee the only true God, and Jesus Christ whom thou has sent."

Is he saying here within the shadow of the Cross: Let my love for thee and for all men prevail undiminished through the lonely and heavy-laden hours ahead, so that men — seeing my voluntary self-sacrifice — may be drawn by our love, into our fellowship, and in that fellowship gain the life beyond all boundaries known unto men?

To know God and his Son, Jesus Christ — is to have eternal life. To know God is to glorify him, magnify him, praise and adore and worship him unendingly.

But knowledge of God would be communicated to other men through the ministry of the disciples and, even though the disciples had spent three years with Jesus, they possessed but limited knowledge and understanding of God and of the Kingdom of God. They needed divine help to an even richer and fuller insight into the mysteries and governing laws of life in God. "I am praying for them," said Jesus.

The disciples were not perfect, but they were men who had heard God speak through Christ, had seen God's light in him and through him, and had left all to follow that light. After the departure of Christ they would be tempted to give up their Christianity. They would be imprisoned, flogged and abused in many ways if they persisted in preaching Christ crucified and arisen.

"Holy Father," prayed Jesus, "Keep them in thy name which thou hast given me, that they may be

one even as we are one. Sanctify them in the truth: thy word is truth."

Jesus had revealed God's name to them, that is, had shown them that God is **Father** infinitely loving, righteous and holy.

He had given them the Father's Word, God's message to man. They had come to believe — as Peter had declared on behalf of all the disciples: "Thou art the Christ, the Son of the living God." They loved Jesus and had declared their willingness to die with him. But Jesus knew how frail they were. He knew that on Good Friday they would be plunged into wordless grief and dark despair, running for their lives, expecting no resurrection, anticipating no Pentecostal baptism by fire.

"Keep them," Jesus prayed. For without the help and protection of the Father they might fall by the wayside even before they had started their work. Help them to become one in their faith, their hope, their love. "Sanctify them in the truth."

A few weeks later the disciples were filled with power from on high and set on fire, holy and radiant fire that never would be extinguished. They were filled with God's own Holy Spirit who enlightened, purified, and sustained them in the faith. They were transformed into holy men of God who because of the truth they had received, the dedication with which they applied it in their own lives, and the consecration with which they proclaimed the good news of the kingdom gained many new believers in Christ.

Keeping the disciples in mind and thinking of their immediate followers and of future generations of Christians, Jesus continued to pray: "I do not pray for these only, but also for those who are to believe in me through their word, that they may all be one; even as thou, Father, art in me, and I in thee, that they also may be in us, so that the world may believe that thou hast sent me."

"That they may all be one...."

Yet, as we read the Book of Acts and the Epistles and study the history of Christianity to this very day, we sadly acknowledge that Christians never have been one on the same high level or as intimately as the Father and the Son are one.

Is it because our love for Christ is too small and our love for self too big?

Why must a community of two thousand souls, for example, have more than a dozen churches, including several of different Lutheran persuasions?

Dr. Kjaer's message was preached on CBS radio network program "Church of the Air" on May 3.

Don't we believe in the same Father, the same Savior, the same Spirit of Truth and Sanctification? How much more effective we could be if we had the love, the faith, the vision, and the courage to pool our resources!

Even in the fields of Foreign Missions denominations appear to compete with other denominations, sometimes making a mockery of the Gospel of Christ.

Haven't we learned anything from the events of the past fifty years? Don't we know what time it is in the history of Christianity? That the forces of darkness are growing stronger, and catacombs are yawning for the surviving few?

And the prayer of Christ is being read in all the churches: "I do not pray for these only, but also for those who are to believe in me through their word, that they may all be one; even as thou, Father, art in me, and I in thee....."

American Bible Society Receives Award for Best Documentary Film of 1958

The American Bible Society has received the 1958 Award for producing the best documentary film of the year, "The Bearer of the Book." The citation was made by the National Evangelical Film Foundation. The presentation of the NEFF Oscar was made by Dr. Harry G. Bristow, Jr., Cineminister, founder and director of the Christian Youth Cinema, Inc., at the World's Only Religious Film Theatre, Philadelphia, Pennsylvania.

"The Bearer of the Book" is a 16mm sound film in Technicolor that highlights the worldwide work of the American Bible Society in its distribution of the Scriptures in many tongues and many lands. The World Premiere of the film was held last October at the Carillon Hotel Auditorium in Miami Beach, Florida.

Hopelessly in Debt

A Christian started to keep a literal book account with the Lord. On one side he put down all he did for God and on the other side what the Lord did for him. When a friend helped or cheered him, he put that down on the Lord's side. If he had been sick and was restored to health, he credited that to the Lord, and so forth.

In this way he recorded all favors and mercies that came to him from God. After a few weeks of this spiritual bookkeeping he gave it up. "It is no use," he said: "I can never get a balance. I am always hopelessly in debt to God."

That is the story of every Christian life; divine goodness always overflows.

— Selected.

Official Notice from Synod Secretary

As of this date the following offices are to be filled by election at the 1959 AEL Church convention:

Synod Treasurer, layman, 4-year term.

Two synod trustees, layman, 3-year terms.

GVC and GVS Board, one (layman), 6-year term.

Pension Fund Board, 3-year term, one member, possible two (consists of three members, generally one pastor, two laymen).

Board of Ordination, 4-year term, one to be elected each year (a pastor this year).

Board of Parish Education, 4-year term, one to be elected each year (a pastor this year).

Santal Mission Committee, 3-year terms, two members to be elected (pastors).

Church Relations Committee (part of the AELC Commission to the JCLU), 2-year terms, two members (1 pastor, 1 lay).

Board of Publication, 4-year terms, one to be elected each year (layman or woman).

Des Moines Old People's Home, 3-year term (usually laymen), one member for 3-year term; one member for one year unexpired term.

Tyler Old People's Home, 3-year term, superintendent to be elected.

Solvang Home, (one) synod representative, 3-year term.

Danish-American Seamen's Mission, New York, three nominations if proposed new rules pass.

Synod Representative on AELYF Board, 2-year term.

The four convention officers are elected annually.

Note to incumbents in office: Synod By-Law V:21 reads: "If the incumbent does not wish to be re-elected he must present a written notice to that effect to the secretary of the synod before the opening of the convention."

The new Synod By-Laws also read (V:18c) "As an aid to the nomination committee the president and the pastor of each congregation may submit names of qualified candidates in advance of the convention to the synodical secretary."

If you are not a pastor or a president of a congregation, but have a good candidate in mind for some office, mention it to your pastor or president.

If you mail such nomination suggestions to the synod secretary, please do so by August 1 to the undersigned.

Rev. W. R. Garred,
Route 2, Hampton, Iowa.

Lutheran Tidings - PUBLISHED BY THE AMERICAN EVANGELICAL LUTHERAN CHURCH

Office of Publication: Lutheran Tidings, Askov, Minnesota.

POSTMASTER: Send Forms 3597 to ASKOV, MINNESOTA.

Editor: Rev. Verner Hansen, 4260 Third Ave., Los Angeles 8, California.

Circulation Manager: Svend Petersen, Askov, Minnesota.

Member of Associated Church Press

Subscription price: 1 year, \$1.25; 2 years, \$2.25

Published semi-monthly on the 5th and 20th of each month. Second class postage paid at Askov, Minnesota.

Merger Meetings Continue

Dr. Johannes Knudsen

In one sense the meetings of JCLU are becoming monotonous; in another and very real sense they are becoming increasingly exciting. They can probably be compared to the track-laying when the first trans-continental railroad was built. It must have been terribly monotonous to lay ties and spike rails, mile after mile, day after day, month after month across the prairies of Nebraska and the highlands of Wyoming. And yet there must have been a mounting excitement as the land rose and the mountains came into view. The day of completion was closer at hand and dreams of an uninterrupted train ride no longer seemed visionary.

JCLU has had its days and months of rail-laying or, to change the metaphor, foundation-laying. Some of this work has been tedious and undramatic. There is not much to report in the papers, for it will yet be a little while before we have a finished product. Constitution and By-laws are important even in their detail; yet it seems an endless mess to give all the details their demonic dues. Lay a tie, place a rail, hit a spike; over and over again. Yet, even this kind of monotony can give exciting moments. There are gullies and rivers to cross, bridges and grades to build; and every once in a while there are patches of quicksand that swallow up the work and make necessary a different approach.

The exciting thing, however, is that fact that the

end is coming into view. The timetable is being met at the present time, and barring revolts or unforeseen difficulties, the proposition of a new church, including all rules and arrangements, should be ready for presentation to the churches about a year from now. When this takes place, the expectant readers will find a beautifully worded and consistently structured set of documents. It is our hope that they will be adequate and accepted.

Beauty and consistency and practicability, while important, are not the main features, however. More important than anything else is the constitutional statement of doctrine, and for this reason we are asking the editor to print this statement in a separate box. I shall not comment upon it; my task at the moment is that of reporting, not of comment.

Of special interest to our group is the inclusion within the constitution of a provision for "Special Interest Conferences." I shall quote Article IX, which covers this: "This church shall authorize, as provided in the by-laws, the organization of special interest conferences of ministers and lay persons having a common linguistic, national, or cultural heritage. Such conferences may hold periodic meetings for fellowship and discussion of common concerns but shall have no powers of legislation or oversight. Reports of meetings, together with any recommendations arising out of the special interest, shall be made to the Executive Council." This provision, which to a large extent is included out of deference to our church, will enable us to carry on our fellowship and perpetuate our heritage within the framework of a new consolidated church.

JCLU will meet again July 16-18 to continue its work.

Doctrine in the Merger Church

Article II. Confession of Faith

SECTION 1. This church confesses Jesus Christ as Lord of the Church. The Holy Spirit creates and sustains the Church through the Gospel and thereby unites believers with their Lord and with one another in the fellowship of faith.

SECTION 2. This church holds that the Gospel is the revelation of God's sovereign will and saving grace in Jesus Christ. In Him, the Word Incarnate, God imparts Himself to men.

SECTION 3. This church acknowledges the Holy Scriptures as the norm for the faith and life of the Church. The Holy Scriptures are the divinely inspired record of God's redemptive act in Christ, for which the Old Testament prepared the way and which the New Testament proclaims. In the continuation of this proclamation in the Church God still speaks through the Holy Scriptures and realizes His redemptive purpose generation after generation.

SECTION 4. This church accepts the Apostles', the Nicene, and the Athanasian creeds as true declarations of the faith of the Church.

SECTION 5. This church accepts the Unaltered Augsburg Confession and Luther's Small Catechism as true witnesses to the Gospel, and acknowledges as one with it in faith and doctrine all churches that likewise accept the teachings of these symbols.

SECTION 6. This church accepts the other symbolical books of the evangelical Lutheran church, the Apology of the Augsburg Confession, the Smalcald Articles, Luther's Large Catechism, and the Formula of Concord as further valid interpretations of the confession of the Church.

SECTION 7. This church affirms that the Gospel transmitted by the Holy Scriptures, to which the creeds and confessions bear witness, is the true treasure of the Church, the substance of its proclamation, and the basis of its unity and continuity. The Holy Spirit uses the proclamation of the Gospel and the administration of the Sacraments to create and sustain Christian faith and fellowship. As this occurs, the Church fulfills its divine mission and purpose.

Report to the Annual Meeting of Grand View College and Grand View Seminary

The following recommendations are part of the report of the Secretary of Grand View College and Grand View Seminary, Inc., to its annual convention August 14 in Detroit. It was adopted at the meeting of the G. V. C. and G. V. S. Board on May 12 and it was decided that it should be printed as information in an early issue of LUTHERAN TIDINGS, as well as in the official report to the Grand View College and Grand View Seminary annual meeting in Detroit.

Harris A. Jespersen, Secretary.

Recommendation by the Board of Directors of Grand View College and Grand View Seminary to the annual meeting of Grand View College and Grand View Seminary at Detroit, Michigan, August 14, 1959....concerning Grand View Seminary.

Five years have passed since our church engaged in searching conversations concerning the future of Grand View Seminary. We then affirmed the fact that the education of men for the ministry was a central and integral part of the work of the church. The obligation to educate with integrity of scholarship as well as loyalty to our own life and history weighed heavily upon us. The decision of the annual convention and meeting of the Grand View College and Seminary Corporation held at Cedar Falls, Iowa, in 1954 was to continue our work at Des Moines with a renewed and concentrated effort. This has been done. A program of improvement was instituted and was made possible by a recognition by the church of its stewardship in this concern. These improvements included remodeled and refurbished quarters for the Seminary, new library and facilities, a Seminary Residence, and an expanded faculty. This program was completed and the Seminary has experienced a renewal in its own life as it has continued in the renewed concern of the Church.

However, one anticipation of the decision of the Church to retain the Seminary in Des Moines has not materialized. In spite of the improvements and the deepened concern on the part of the congregations the enrollment has not increased as expected. A slight increase has been attained but the needs of the Church which in 1954 expressed itself in a minimum projected enrollment of twelve students have not been met. According to the decision then reached, a review of the total situation five years hence was called for. That time has now elapsed and consistent with our concern and self-examination of that time this review must be made.

The situation wherein the church sought to understand itself in 1954 has changed. Since that time we have responded to an invitation to participate in discussion leading to a Lutheran Church Merger far more inclusive than the one envisioned. Although we were then considering affiliation with the United Lutheran Church in America, a move that was rejected the following year, we are now working with three other Lutheran Churches blue-printing a completely new Church in polity and constituency. Few

will dispute that we are more committed to the new Church that will emerge from the work of the Joint Commission on Lutheran Unity than we were in 1954 to affiliation with the ULCA. Although the date of its realization remains several years distant, the future affects us even today. We are further privileged to have a significant voice in the negotiations leading to the formation of the new Church. The ministry of the men now studying in the Seminary may not be served in the life and work of the AELC but in the new Church of which we may become an integral part.

The realization of this leads to two conclusions. First of all a general conclusion and understandable impatience on the part of the men who are responding to the call of the Church to its service. They need, want, and deserve a professional and accredited training wherein they will be equipped for the ministry which they envision. Quite naturally, they tend to view the present Grand View Seminary as oriented toward a service in the ministry of the AELC. Apparently more men are coming out of our congregations with a consciousness of God's call to the ministry than at any time in the history of our church. It would seem that our prayers and our life in Him are finally reaching fruition. Six men from our Church began their seminary education in the fall of 1958. A similar number, perhaps more, will enroll in a seminary for the first time this fall. But only half of these young men are enrolling at Grand View Seminary. They are torn by loyalty and their clear knowledge of the future. There is no reason to believe that the current trend will not continue or increase.

Realizing the situation as it exists both with respect to the continued limited enrollment at Des Moines, and in the minds of our young men, the Church must also consider and reach a conclusion regarding its obligation to the future. In the conviction that we do not contemplate or face the future with empty hands but that God has been with us and has given us a wealth which is our spiritual legacy, we earnestly desire that this might continue to live in the Church of tomorrow. Quite aside from all arguments for a broader and more academically valid educational experience, which are as pressing today as they were in 1954, it is our conviction that we must educate our young men where they are and seize the opportunity to contribute to the future. As long as we remain a Church, it is incumbent upon us to educate men for

the ministry. Grand View Seminary must continue as an entity, but in the interim period in which we now live, our concern must be toward the future as well as the past.

During the past year, four Seminaries of the four merging bodies involved in the JCLU discussions have themselves engaged in extensive discussions concerning the future of Seminary education. Augustana Seminary of the Augustana Lutheran Church, Suomi Seminary of the Finnish Evangelical Lutheran Church, Chicago Lutheran Theological Seminary at Maywood, Illinois, of the United Lutheran Church and our own Grand View Seminary have discussed and are currently discussing plans for an entirely new Seminary in the Chicago area which might embody the traditions and life streams of each of the four institutions and the Churches that they served. This new school which will symbolize and articulate the roots of the new Church in a most meaningful manner will not materialize for several years. But it offers to us in both its planning and actualization a most tangible way in which we may contribute to the new church out of the wealth of our own past.

In 1958 the Annual Convention of the Grand View College and Grand View Seminary Corporation passed the following motion:

That the Seminary Committee of the Board of Directors, and the Dean of the Seminary, investigate and study plans for affiliating Grand View Seminary with a larger school, and submit their proposals to the 1959 convention.

During the past year, in compliance with this mandate, the Seminary Committee, the Board of Directors of Grand View College and Seminary, and the Seminary administration have discussed at length the problem of the future of Grand View Seminary. In the course of investigation, extended conversations were held with two Seminaries of the United Lutheran Church: Central Lutheran Seminary at Fremont, Nebraska, and Chicago Lutheran Theological Seminary at Maywood, Illinois. Specific terms of affiliation on a cost basis (whereby Grand View Seminary retains its identity) were obtained from both institutions. Again we engaged upon thorough debate and evaluation. A decision was reached by the Seminary Committee recommending to the Board of Directors the affiliation of Grand View Seminary with Chicago Lutheran Theological Seminary at Maywood, Illinois, by the fall of 1960.

This decision was based upon the following reasons:

1. The recognized academic standing of the Seminary at Maywood. The school has long been accredited and offers a faculty which is most capable and renowned.
2. As Chicago is an important center of theological education in our country, there are opportunities afforded to students at this school which are to be coveted.
3. The broader background of the larger student body at Chicago Lutheran and the advantages which fellowship with this student body offers the young men of our Church matches the academic gains which affiliation would bring.
4. The prospect for future contribution to the edu-

cational task of the new Church in a new Seminary embodying the traditions of the four merging churches can best be realized through present affiliation with Chicago Lutheran Seminary.

The Board of Directors of Grand View College and Grand View Seminary, having accepted the above recommendation from the Seminary Committee, therefore makes the following recommendation to the Annual Meeting of Grand View College and Grand View Seminary:

"That Grand View Seminary be affiliated with the Chicago Lutheran Theological Seminary at Maywood, Illinois, as of July 1st, 1960.....according to the appended principles of agreement and financial conditions."

Principles of Agreement Between the Chicago Lutheran Theological Seminary and Grand View College and Grand View Seminary

1. Whereas the Grand View College and Grand View Seminary and Chicago Lutheran Theological Seminary have engaged in discussion concerning the relocation of the Grand View Seminary upon the Chicago Lutheran Seminary's Maywood campus; it is hereby set forth that amicable cooperation shall be established as between the American Evangelical Lutheran Church and the United Lutheran Church in America, and its synods thereto pertaining, with respect to theological education at Chicago Lutheran Theological Seminary through affiliation of Grand View Seminary with said Chicago Lutheran Seminary, Maywood, Illinois.

2. Upon the date set hereunder upon which this agreement shall become effective, Grand View Seminary shall make the following member of its Theological faculty available as professor in Chicago Theological Seminary; Axel C. Kildegard. It is further agreed that said professor shall be integrated into the present Chicago Theological Curriculum without discrimination.

3. The Chicago Lutheran Theological Seminary shall provide all its academic facilities and pay all salaries; in return for which the Grand View College and Grand View Seminary shall pay the Chicago Theological Seminary an amount mutually agreed upon. In any one fiscal year said payment shall not exceed, except by mutual consent, the per capita amount paid by constituent supporting synods of the institution as applied to the equivalent unit of the American Evangelical Lutheran Church. Payments are to be made quarterly.

4. Charges made to students of the Grand View Seminary shall be uniform with those found in the catalog in any given year. Health Insurance shall be obligatory for Grand View students in the same manner as for other students of the Seminary.

5. The same opportunities for employment as well as restrictions (twenty hours per week maximum employment) shall apply to Grand View Seminary students as to other students under similar circumstances. Under normal circumstances one-half of a student's expenses are payable in this manner.

6. Housing for Grand View Seminary students will be provided by the Theological Seminary at current rates.



Paging Youth

American Evangelical Luth.
Youth Fellowship

EDITOR: EVERETT NIELSEN

1100 Boyd,
Des Moines 16, Iowa

AELYF Doin's

Newington, Connecticut: The LYF here sent nine representatives, two advisors and the pastor to the district convention at Bridgeport. Several of our members will be serving on the district board for the next year. The officers are: Janice Tubbs, Newington, president; Bill Shermer, Bridgeport, vice president; Jeff Jensen, Edison, secretary; Mary Larsen, Newington, treasurer; Rev. Holger Nielsen, Newington, advisor. We will be hosts to the convention next year. We have also been working on our altar at the camp-site (Covington). The altar is at the bottom of a hill, thus making it a center of attention. The altar is constructed of field stone and is about six feet long and three feet high. The cross is made from an oak tree.

Grayling, Michigan: Miss Karen Knudsen, daughter of Pastor and Mrs. Harald Knudsen, was chosen to attend the Michigan Girls' State, June 16-25. This is a high honor given to a junior girl in high school so that young people may become better acquainted with governmental functions. The week is sponsored by the American Legion Auxiliary. Karen has been very active in high school activities and is to be congratulated on this accomplishment.

Over the Typewriter

Camping season is upon us. It is high time that each of us gets out his gear... knife, Bible, trumpet, sleeping bag... and heads for one of the AELYF camps. There are many to choose from, distance being the only obstacle. It will be more than worth your time to sit down and figure how you can give up a few movies, a football game, a few malts, and so on, and use that money for camp. Here is a partial schedule of camps available to you this summer.

June 21-27—North Fork, California

June 28-July 5—Caseville, Michigan

July 7-13—Luck, Wisconsin

July 5-10—Junior Camp, Nysted, Nebraska

July 19-26—Junior Camp, Des Moines, Iowa

August 23-30—Luther, Iowa

There will also be a Junior Camp in Michigan and probably a senior camp in Nebraska. The dates and places will be announced in the next issue.

You Northern Lighters should plan to come a few days early to help clear the grounds, etc., at the new camp-site near Luck.

Californians to Meet

The California District Camp will be held June 21-27, at the Sierra Lutheran Camp near North Fork, California. The camp-site is near Bass Lake, with fine facilities for camping, athletics, residence halls and all the rest.

Groups from Solvang, Salinas, Watsonville, Fresno and Los Angeles are expected. There will be the usual round of activities, with Pastors Farstrup and Nussle and Seminarian Everett Nielsen, the Synod Youth Activities Director, providing the leadership. One of the topics of discussion will be centered around the possible formation of a California District of AELYF.

This will be a fine opportunity for the youth of the West to find out how the rest of the AELYF thinks and acts. What better place than in the high Sierras to live and learn about others and to worship God! It is hoped that a large number will attend so that all may share in that enriching experience.

A typical day runs along these lines:

7:15—Everybody up	2:30—Swimming
7:45—Morning Devotions	4:00—Special Events
8:00—Breakfast	5:00—Prog. planning
8:30—Clean-up	6:00—Supper
9:00—Bible Study	7:00—Singing
10:00—Athletics	7:30—Skits and Stunts
Noon—Lunch	8:30—Folk dancing
1:30—Discussions	9:30—Campfire

Caseville is Camp-Site

The Lake Michigan District of the AELYF will hold its annual camp and convention in Sleeper State Park near Caseville, Michigan, June 28-July 5. The theme this year is "Walk in the Newness of Life."

Nine hundred and twenty-one acres of park are waiting to be invaded by campers and counselors from the dozen or so LYFs of that district. Cabins, kitchens and the works lie near the vast natural sand beaches on the Saginaw Bay and Lake Huron shore with forested area all around. This "Thumb" area is a popular place for vacationers from all over the United States. This particular camp is away from the crowd with room for 120 people.

Registrations should be sent to Rev. Harry Andersen, Route 3, Marlette, Michigan. Two dollars should accompany your list of names. The total cost for the week is only \$17.00, a bargain in this day and age.

The day will be filled with devotions, Bible study, sports, eating, swimming, discussing, free time, singing, leadership training, folk dancing, and camp-fire. Six pastors are scheduled to attend so there will be excellent leadership. The new Synod Youth Activities Director, Everett Nielsen, will also be there.

Correction

The last issue of LUTHERAN TIDINGS carried a report of the Iowa District Convention. A contribution of ten dollars should have read one hundred. This is one of the regrettable parts of being human... errors are committed. This \$100 contribution will assist the Youth Activities Director make a better contribution to the various areas of AELYF. Sorry!

Our Women's Work

MRS. AAGE PAULSEN, EDITOR

Beaver Crossing, Nebraska



Review of Uncommitted Continent

UNCOMMITTED CONTINENT by Rudolph C. Burke is the first cooperative publishing venture of the women's organization of six National Lutheran Council churches and was written to fill the need for a Lutheran supplement to the excellent study books prepared by the Commission on Missionary Education, NCCCUSA, for the 1959-60 mission theme, "The Church's Mission in Africa."

The book's six highly readable and revealing chapters by the associate director of the Board of World Missions of the Augustana Lutheran Church, throws a spotlight on the century-old work of the Lutheran Church in Africa and the revolutionary changes taking place today. How the African Christians, their Church, and the missionaries are meeting the challenge of these changes makes stirring reading.

Discussion questions, maps, a chart, and specific directions for using the book for small and large study groups are included in the 64-page book.

The book is available from: Augustana Lutheran Church Women, 3939 Pine Grove Avenue, Chicago 13, Illinois; Lutheran Publishing House, 138 North 17th Street, Blair, Nebraska; United Lutheran Church Women, 2900 Queen Lane, Philadelphia 29, Pennsylvania; Women's Missionary Federation, American Lutheran Church, 57 East Main Street, Columbus 15, Ohio. Price: 50 cents.

The above is recommended for program material.

E. P.

District IV WMS Spring Fellowship Day

The first Annual District IV WMS Spring Fellowship Day was held in Des Moines, Wednesday, May 20, from 10 a. m. to 3 p. m. So successful was this meeting that we wish to tell the readers of OUR WOMEN'S WORK about it. The meeting was arranged by the board of the WMS of our district. This was to be a meeting for fellowship and inspiration. Not an ounce of business was conducted, and it was most enjoyable.

The women of Luther Memorial acted as hostesses, and a very tasty luncheon was served by them at noon. As you might expect, we closed at 3 p. m., but not until coffee had been served.

The program was as follows:

- 10:00 a. m.—Welcome, Mrs. Holger P. Jorgensen
- Devotions, Mrs. Axel Kildegaard
- 10:30 a. m.—Discussion of Projects
- Korean Orphans, Mrs. Agnes Holst
- Santal Child, Mrs. Agneta Jensen
- Chicago Children's Home, Miss Margaret Michaelson
- Scholarship Fund, Mrs. Ernest D. Nielsen
- 12:00 noon—Luncheon
- 1:30 p. m.—Introduction to WORLD OF SONG, Mrs. Wayne Nelson
- 2:00 p. m.—Inspirational Address, Mrs. Charles Hipwood, President, Des Moines Council of United Church Women
- Offering
- Announcements
- Closing
- 3:00 p. m.—Coffee

Actually just how successful was this venture? Why not draw your own conclusion! There were 107 registrations. Actually there were 92 women who sat down to a

delicious luncheon, but there were many of Luther Memorial's women who worked in both the kitchen and dining room. And this may surprise you, though it really shouldn't. There were women from **every** congregation in the district! If you women from the other districts in our synod would really enjoy a get-together of this kind, we of District IV invite you to try this way. If you have half the success we did, you'll love it. How about it? ? ?

A. F. N.

Scholarship Fund

If you will refer to the short article on District IV Fellowship Meeting you will note that we discussed projects. I was allotted about twenty minutes and hadn't even scratched the surface. It was therefore suggested that I share the contents of the talk with you, the interested women of the synod.

Last November, a committee consisting of Miss Mabel Petersen, Mrs. Harold Petersen (Tyler), and I were asked to serve on this Scholarship Fund committee. We were given a motion passed by the board of WMS as a basis for our work. This motion reads as follows: It was MSC that the Thankoffering (Jubilee) be used to create a Scholarship Fund for students wishing to take up full-time Christian Service in fields served by AELC.

There seemed to me to be only one restriction, and that one is in interpretation rather than actually in writing. I was told that the Fund was **not** to be a Grand View College scholarship specifically. In other words if we recommend that it be used by a second year student at GVC this might be acceptable, but it could also be used for study **beyond** the junior college level. In fact, it is my definite impression that it was originally intended for upper classmen.

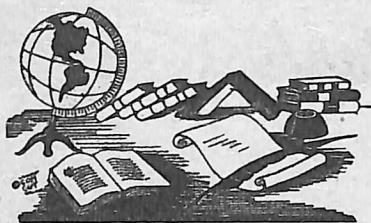
The last information I had as to the amount already collected for the fund was \$4,323.13. It is my understanding that there are plans to greatly increase this amount. Although in my correspondence with the committee members I discovered that we were not in complete agreement in any one of the areas I listed for consideration, I feel that when we have talked it over, we can come with some concrete proposal.

You may ask what are some of the fields of Christian service that will directly touch the AELC. I shall list a few. Missionaries: educators, nurses. Social workers: case-workers (Here there is a very great need for women workers). Student counselors, and should the college continue to grow, teachers, dean of women, fulltime nurse, housemothers. These are just a few. Perhaps you can think of more. There are vocations where I don't believe we could use workers since our churches are not large enough. Here I would include organists, choir directors, parish workers, and religious education directors. (Our motion says "full-time" workers).

With the merger in the near future practically a certainty, how will this affect our Scholarship fund? We will then no longer be AELC, and if we become a part of the big women's organization, we shall, I suppose, pool all our resources. This, of course, is not bad. I merely raise this point because I feel that merger is very much closer than most of us have dared to think. Can we, with this in mind, continue to solicit funds for a fund to be used by AELC? I know that the new large church will be able to use many more "fulltime Christian workers" than we could. There is immediate need for hundreds of caseworkers, for in-

(Continued on Page 16)

OPINION AND COMMENT



THE PRESIDENT OF THE U. S. has issued a proclamation announcing the participation of our nation in what is known as World Refugee Year. Actually, the "Year" began the 1st of June. Our participation is scheduled for July 1. This is a United Nations undertaking, and will spotlight some of the toughest refugee problems throughout the world, according to a memo from the NLC's Washington office. A White House Conference on Refugees was held recently attended by agency heads and church leaders, including Paul Empie and Stewart Herman. The 5-point program of participation by the U. S. was there outlined as follows: 1) \$40 millions to be spent each year to support present refugee programs. This includes the so-called "Escapee Program," and the European Migration Committee as well as the U.N.'s own Commission for Refugees. 2) Special refugee problems will receive \$4 millions, such as the planned closing of European camps, the rehabilitation of refugees from Communism. Included also are "White Russian" refugees in China, Algerian refugees, Chinese refugees in Hong Kong, etc. Arabs will also be aided, if Congress approves. 3) An immigration program for refugees needing resettlement. 4) An increase of between 10 and 20 million dollars in surplus foods to be given to refugees, for such places as Hong Kong, Palestine, Morocco, etc. 5) Support to the U. S. Committee for Refugees, and to voluntary welfare agencies, including church organizations, such as Lutheran World Relief, Church World Service, etc. The entire refugee situation is still nothing less than appalling, and this high-level action is heartening. Those who have seen the refugee centers (many of them cannot even be called camps) return from the experience as awakening from a nightmare, or from a filmed glimpse of medieval horror. L.W.R. has done much, but even its great efforts make barely a scratch in the whole surface of human need. In the next issue of LUTHERAN TIDINGS, we are planning to give special emphasis to the work of Church World Service.

SOME RATHER remarkable results were achieved during the recent "geo-physical year" — the international cooperative effort for the sharing of scientific discoveries, mostly astronomical. Maybe what the world really needs is a "geo-spiritual year" with a great cooperative effort at spiritual discovery.

THIS PAGE does not usually lend its support to unofficial solicitations within our Synod. Here is an exception. We want to say a word in behalf of the South Africa Defense Fund. During the last two years, 91 persons in South Africa have been on trial on the

lawyers, clergymen, laborers, professors, who are all accused of working against the segregation policies in effect in their land. Only 20 per cent of the people there charge of treason. Among the accused are doctors, are white; yet the **apartheid** program is directed at the remaining 80 per cent of the population. Against this injustice the 91 have raised their voices, and have thus been accused of treason against the government, for which the penalty could be death. Defense funds are needed by these defendants at once, and chairmen of the Fund which aims to help these men are the eminent Rev. James A. Pike and John Gunther. A quarter of a million has already been spent in the defense. Another \$150,000 is urgently needed, and at once. If any reader would care to make a donation to this humanitarian cause, the address is: South Africa Defense Fund, 4 West 40th St., New York 18, N. Y. An unhealthy situation exists often when a minority group is in power. Justice takes strange turns under those conditions. Where real brotherhood of man can be achieved in spite of lopsided minorities, we have great cause for rejoicing. Our family has a personal experience of this for which we are each day grateful. Our littlest daughter is one of five white children in a school class of 35. The class relationships could not be healthier. . . . Social concern is one of the outgrowths of Christian maturity, and if the reader can see his way to making a donation to this Fund he will be one with a company that includes such sponsors as: Ralph Sockman, Reinhold Niebuhr, Norman Thomas, Henry P. Van Dusen, Harry Emerson Fosdick, Lewis Mumford, John Mackay, Robert McCracken, William Ernest Hocking, Norman Cousins, Van Wyck Brooks, Victor Reuther, as well as many others.

CARL, our church custodian, dropped in to tell us that the coming 4th of July week-end will cost hundreds of motorists their lives. "The trouble is," he says, "that too many drivers insist on their rites."

Eventide

It is a lovely thing —
The silence which hovers like a wing
Above the world of men
When darkness comes.
Fear, hate, and anger fade away,
And peace becalms the turmoil of the day.
It is the quietness
Which every worker needs;
This sweet-serenity at close of day,
When we may rest and pray.

—Lola M. Hazard.

Manner, not gold, is woman's best adornment.
—Menander (343-292 B. C.)

Meetings of Synod Board

The synod conventions have expressed a desire to have church members from "outlying districts" on the synod board. This desire is understandable but it adds considerably to the traveling expense item of the board.

Vice President Farstrup lives in California. In order to economize on both money and time, several meetings which involve the vice president, such as those of the Joint Commission on Lutheran Unity, have been held during the same week we had synod board meeting. This was the case in early March 1959.

At that meeting, trustee John Lund was absent on business in Germany. Mr. Aksel Nielsen who took office as trustee January 1959, was welcomed at the March meeting as a voting member of the board. At the board meeting held May 20, the vice president was excused, and Mr. Lund was back with us.

Between meetings it is necessary to vote on certain matters by mail. These matters are then recorded in the minutes of the subsequent meeting of the board. Thus, Attorney James Hall of Des Moines, who has been the synod board's attorney for many years, though not a member of the synod, was approved as our representative on the JCLU's Legal Committee. This committee has met and is requesting copies of deeds of all synod property, copies of articles of incorporation, as well as copies of constitutions for boards and institutions of the synod. The synod treasurer and the synod secretary will help President Jensen gather these for the JCLU Legal Committee.

At the March meeting the 1958 treasurer's report (the one that will appear in the 1959 Report book) was studied. We have had another good year financially, though the Santal Mission item fell \$673.35 short of the \$14,000 goal. \$30,400 was paid out in pensions during 1958.

The vacant pastoral calls are considered at each meeting. We seem to continue to lose more pastors, through retirement or leaving the synod, than we get new pastors.

The work done on the 1960 proposed budget gave occasion for a general survey of the synod's work. Some items were reduced, others increased, with the net result that the 1960 proposed budget is \$118,478 as compared with \$114,422 for this year. Let us remember that a growing budget is a sign of a bigger field of church work and influence.

As the Executive Committee of the Home Mission Council, the synod board at its meetings surveys the home mission work and church extension loans of the synod. The minutes of that part of the meeting is sent to the rest of the Home Mission Council, namely the district presidents, who are also kept posted throughout the year on all developments in home missions by the chairman, which is the synod president.

Three such fields were given major attention this spring, namely Brayton, Iowa; Watsonville, California; and North Cedar, Iowa.

Readers of LUTHERAN TIDINGS will be familiar with the situation at Brayton (a merger of our former

Oak Hill and Exira congregations) and at North Cedar (which is not an address, by the way) where we have a new congregation, St. Peter's Church, Cedar Falls.

St. Peter's Church requested home mission aid of \$2,400 in 1960, to be reduced by 10 per cent each succeeding year. This was granted, contingent upon the congregation being admitted to AELC membership by convention action.

The Brayton Lutheran Church was granted a Church Extension Fund loan of \$15,000 as a help toward a \$50,000 new church. This loan is to be secured by a mortgage, and is payable in 15 years or before. The same congregation has applied for some home mission aid in the first critical period of its new life. \$600 a year was granted for the two years of 1959 and 1960.

First Lutheran Church, Watsonville, California, is relocating and planning to build a chapel, and a social hall for approximately \$85,000. A loan of \$10,500 was previously granted this church from Church Extension funds, toward the purchase of land. The congregation requested an additional \$50,000 from Church Extension. A loan of \$30,000 was granted, to be secured by a mortgage and payable on or before 15 years from the date of the loan. The total amount in available church extension funds at the present time is \$52,000. Such funds are deposited in Federal Savings and Loan accounts, as well as in the synod's treasury's bank in Minneapolis.

The Synod Board members were the guests of the Des Moines Old People's Home for lunch on May 20. The recently installed sprinkler system and fire door were inspected. Synod President Jensen and Trustee Erling V. Jensen were a committee of the board for this work. The same two will continue as a committee of the board on further new work around the Home, namely a dining room exit at the east end, and a driveway at the west end for an ambulance entrance. This same driveway will serve the Luther Memorial parsonage. These improvements are being met by a loan from the Home's Reserve Fund to its Operating Fund. A nurse call system is to be installed in all rooms of the Home.

In other fields we were informed that our Flaxton, N. D., congregation, which has been inactive for several years, has dissolved and some of the proceeds of sale of property is being turned over the synod and District V.

Our Newark, N. J., congregation will be served from June 1959 by Mr. Donald Baron, a graduate of the ELC's Luther Seminary, and now studying at Yale Divinity School, New Haven, Conn.

One hundred copies of the 1959 Lutheran Church Directory have been purchased and mailed to pastors of the synod.

The synod's endowment funds and investments are given the necessary consideration at each meeting. The treasurer's reports in the Report book will show all financial transactions.

The Grand View College Endowment Fund trustees met also in March in connection with the synod board

Annual Santal Mission Meeting, 1959

DAGMAR MILLER

Our Savior's Lutheran Church, Racine, Wisconsin, was this year host to the Santal Mission's annual meeting, May 1-3.

To the Board members and others, this meant considerable work hours. I find these Santal meetings a time of profitable engagement in prayer for blessing and thanksgiving to our heavenly Father for abundant blessing upon the work and workers in India. To meet the Board members, the host congregation and other interested Mission friends, means much. As for me, it is ever a heartwarming experience at this meeting to meet with missionaries on furlough. And at Racine were Pastor and Mrs. Kr. Trøneborg, retired missionaries from Norway sharing with us in this worthwhile fellowship. Vividly, we were reminded of the many times in Assam, the nature of our service drew us together in the closest cooperation. Being able to discuss the work with Naomi Torkelson and Hilma Gjerde was enlightening, as was the time spent with Benjamin Pauria, the Santal student at Augustana College, Sioux Falls, S. D.

I shall not attempt to give a report on messages given. However, the President, Dr. Stensvaag, did indeed, present an enlightening and inspiring picture as he related his experiences. He, with Bishop Schiøler, and Bishop Wisløf,

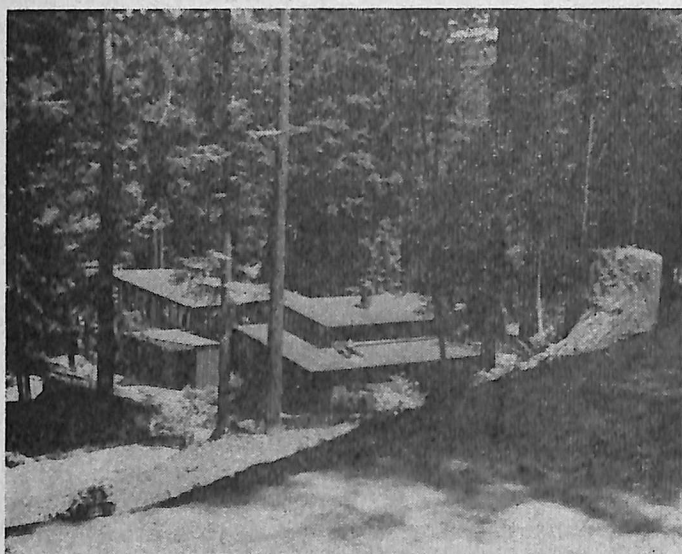
of Denmark, and Norway, respectively, toured our entire field. True, he did leave off on the note "Our Unfinished Task." God helping, we will stand shoulder to shoulder with our brethren in the Ebenezer Evangelical Lutheran Church of India.

One remark on Dr. Add Gornitzka's Bible hour on Ephesians 2: True joy in our Christian standing in Christ became so very real — being no more children of wrath but through grace realize the fact expressed in Verse 1, "And you He made alive."

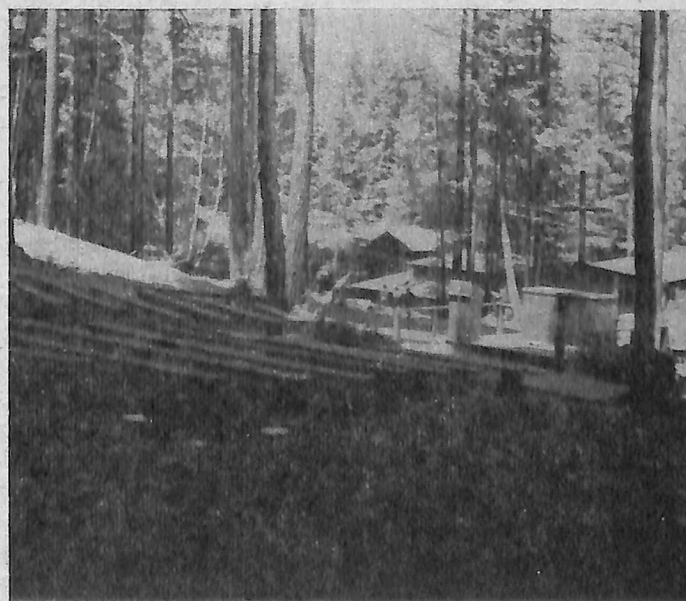
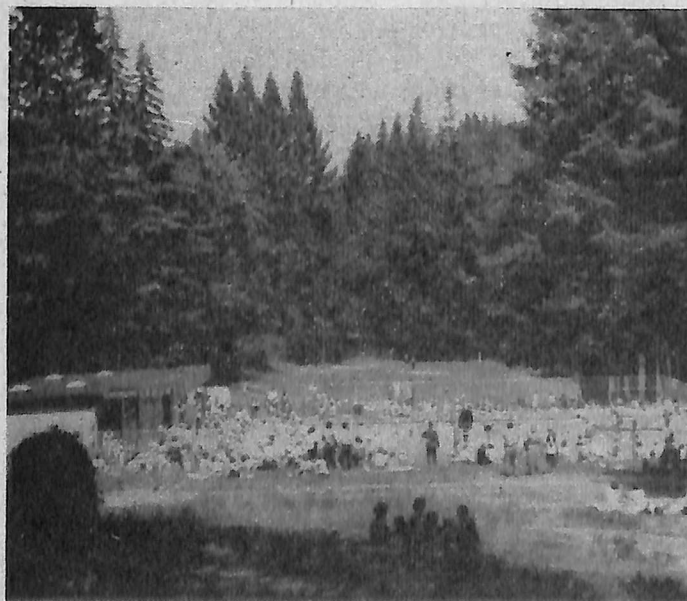
Quite some discussion centered about the venture — a TB unit to be added to the Mohulpahari Hospital in Santal Parganas. Oh, for facilities to more effectively serve the many afflicted with this illness.

The general budget has, as always, claim to our contributions. True, we who give aid to children in schools, be they orphans or not, know that it is because of inability of parents to keep such children in school we give the \$30 or so that they who are in charge may be able to care for them even as in an orphanage. May our joy as Christians in our land, be the impetus to generous giving to the many who need.

In closing, let me say — to attend some, or better still, all, the meetings of the Santal Mission is a rewarding experience.



Pictured here are scenes from the incomparably beautiful campsite of Mt. Cross Lutheran Camp in the Santa Cruz Mountains south of San Francisco. District VIII women will be meeting here starting June 29 for the annual Women's Retreat. On the program are the Rev. Leonard Maygaard, (Aug.), the Rev. Kenneth Senft, (ULCA), and the Rev. Verner Hansen of Los Angeles, who will be Retreat chaplain.



81st Annual Convention of the American Evangelical Lutheran Church

AUGUST 11-16, 1959

The 82nd annual convention of the American Evangelical Lutheran Church will take place at the Greenfield Methodist Church, 19370 Greenfield Road, Detroit 35, Michigan, upon invitation of St. Peter's Evangelical Lutheran Church, 19900 Greenfield Road, Detroit, 35, Mich. The business sessions, the main meetings and services will be held at Greenfield Methodist Church. The opening service of the convention is scheduled for Tuesday evening at 8, August 11. The business sessions of the convention will commence Wednesday, August 15, 9 a. m.

All congregations belonging to the Synod are urged to be represented at the convention by delegates chosen according to the by-laws of the Synod and all pastors are likewise urged to attend. Registration should be in the hands of the credentials committee of the convention not later than July 15. All delegates must be certified by the secretaries of their respective congregations. Name and address of the chairman of the registration and credentials committee appear in the invitation from St. Peter's Church printed below.

The convention will deal with all business submitted to it for action according to the rules governing the convention and found in the Synod by-laws as well as those governing the institutions, missions, councils and committees of the Synod.

The reports to be presented to the convention must be in the hands of the president of the Synod by May 20 in order that they may be printed in the Annual Report and distributed to the congregations and ministers for their study in due time before the convention.

Any member of a congregation or any congregation or pastor of the Synod may submit topics for the consideration of the convention according to Article VIII, par. 5, if such topics are received by the Synod president in time for publication in the July 5 issue of LUTHERAN TIDINGS.

Members and friends of the Synod are invited to attend the meetings and services of the convention. St. Peter's Lutheran Church will make announcement concerning the lodging and meals of delegates, pastors and guests.

May God guide, instruct and inspire us as we prepare ourselves for work and fellowship as offered by the convention. Only as we willingly and faithfully accept our responsibilities as members of the body of Christ will we experience His blessing. May God grant us a fruitful convention.

Des Moines, Iowa, April 24, 1959

Alfred Jensen.

Convention Invitation

The Congregation of St. Peter's Danish Evangelical Lutheran Church of Detroit, Michigan, is pleased to extend a hearty and sincere invitation to pastors, delegates and members of the American Evangelical Lutheran Church to attend its Annual Synodical Convention, which will be held here from August 11-16.

We are fortunate in having secured an excellent convention site at Greenfield Methodist Church, which is just two blocks south of our church. We are actively engaged in preparations and are anxiously awaiting the beginning of the Convention.

All pastors and delegates must send their registrations and credentials to our Registration Committee no later than July 15. The Registration Committee Chairman is Mr. George Everson, 19900 Greenfield Road, Detroit 35, Michigan.

We will provide housing for all the Convention personnel, pastors and delegates and will to the best of our ability accommodate guests.

We of the Detroit Congregation are pleased to have this opportunity to perpetuate the work of the Lord. May this Convention as its predecessors be an enriching Christian experience through its fellowship and spiritual enrichment.

Paul J. Blinkilde, President.

Howard Christensen, Pastor.

Topic for Discussion No. 1

That The Synod Representative for Eben-Ezer Lutheran Home and Hospital, Brush, Colorado, be chosen at the District VII Convention,

That The Synod Representative for Pioneer Memorial Home, Askov, Minnesota, be chosen at the District V Convention,

That The Synod Representative for the Des Moines Old People's Home Board be chosen at the District IV Convention,

That The Synod Representative for the Tyler Old People's Home be chosen at the District VI Convention,

That The Synod Representative for Solvang Lutheran Home, Solvang, California, be chosen at District VIII Convention,

And that the rules concerning such institutions be changed to accord with these changes.

Arnold D. Knudsen,
Junction City, Oregon.

Notice

The Board of Directors of Grand View College and Grand View Seminary proposes to the Annual Meeting of Grand View College and Grand View Seminary (August 14, 1959) that the following amendment be added to Article I of the By-Laws of Grand View College and Grand View Seminary as Section 8.

"The report of the secretary of the Board of Directors to the annual meeting shall contain, among other things, information regarding salaries, the number of students, and other statistical information. This report shall be considered by a findings committee appointed by the chairman and assistant chairman of the annual meeting. The rules for this findings committee shall be the same as those pertaining to the findings committees of the convention of the American Evangelical Lutheran Church."

Persons are the predominant powers in the Bible.

Pulpit Monthly.

Report to the Annual Meeting of Grand View College and Grand View Seminary

(Continued from Page 7)

7. Grand View Seminary students shall participate in the internship program of the Chicago Seminary, having the option of taking Field Work in which the student serves a congregation in the capacity of Youth Director or Assistant — a maximum of sixteen hours each week at a minimum reimbursement of \$40 per month; or of participating in a one-year internship program. Grand View Seminary students may serve American Evangelical Lutheran congregations in the fulfillment of either one or both of the above options. Preaching and other assignments to Grand View Seminary students will be done in accordance with regulations of the Chicago Seminary but with the approval of the Grand View Seminary faculty member.

8. It shall be agreed that Grand View Seminary students shall accept only American Evangelical Lutheran Church pulpits upon graduation and ordination. To this end the Grand View Seminary shall be responsible for its own program of recruitment and placement.

9. The Grand View College and Grand View Seminary shall be represented by one consultative member on the Board of Directors of the Chicago Seminary. Said consultative member shall have voice but no vote, and shall be elected by the Board of Directors of the Grand View College and Grand View Seminary, upon nomination by the Seminary Committee.

10. The Grand View Seminary member of the faculty shall be the liaison between the Chicago Seminary and Grand View College and Grand View Seminary Board.

11. The records of Grand View Seminary and its theological library, or such portions of it as may be deemed advisable, shall be transferred to the Chicago Seminary Campus at the time this agreement becomes effective, but both shall remain the property of the Grand View Seminary. To facilitate the moving of the library and to avoid duplication, the librarian of the Chicago Seminary shall go to Des Moines to make the selection of English books. The Danish library, or any portion thereof, will be transferred at the discretion of the Grand View Seminary faculty member.

12. The Grand View College and Grand View Seminary shall recommend and endorse the transfer of Grand View students to the Maywood campus, and shall continue to give support to the Grand View Seminary at the new location.

13. Although the curricular requirements for Grand View Seminary students will be identical to those for other students, it is agreed that the

following shall be required of Grand View Seminary students: Church history of Denmark and the American Evangelical Lutheran Church, six quarter hours. This course shall be taken in lieu of electives and shall be open to non-Grand View Seminary students.

14. Among the responsibilities of the liaison professor shall be recruitment of students, guidance, supervision of field work and internship of Grand View Seminary students, and the library work related to the special offerings of the Grand View Seminary curriculum. An equivalent of one three-hour quarter course shall be allowed the professor for the fulfillment of these duties.

15. Faculty meetings shall be presided over by the president of the Chicago Seminary. But it is agreed that the president and faculty shall give due consideration, in their decisions, to the requests and petitions of the Grand View Seminary Board as presented by the liaison professor and/or his designee.

16. In the usual matters of discipline, control and finances the administration of the Chicago Seminary shall be responsible.

17. An office in a suitable place will be made available to the Grand View Seminary professor.

18. The Chicago Lutheran Theological Seminary catalog shall include a listing of Grand View Seminary course offerings and any other pertinent information.

19. The B.D. degree or the Seminary Diploma at the satisfactory termination of the Grand View Seminary's education will be granted by the Chicago Seminary.

20. The affiliation herein specified, for the two seminaries shall become effective upon July 1, 1960. This agreement may be terminated by either party, or by mutual agreement, upon notice given one year in advance of date of termination.

21. All expenses incurred with the moving of Grand View Seminary as well as subsequent travel expenses of the board representative and the liaison professor of Grand View Seminary shall be paid by Grand View College and Grand View Seminary.

22. Grand View College and Grand View Seminary agrees to buy all library books used exclusively for Grand View Seminary students.

STUDENT COST

	Grand View Sem.	Chicago Luth. Sem.
Annual		
Room, single	\$120.00	\$165.00
Board	350.00	345.00
Health insurance	15.00	27.00
Student Assn. dues		12.00
Contingency fee	15.00	
	\$500.00	\$549.00
Non-recurring fees		38.00
Parking fees		15.00

SEMINARY BUDGET

Based on eight students

Chicago Lutheran Seminary

One professor	\$ 8,877.00*
Tuition, paid for students	1,800.00
Grant in Aid, paid to students	2,400.00
Contingency fee, paid for students	720.00
Office secretary	200.00
Travel	300.00
Office rental	200.00*

\$14,497.00

* To be paid to Chicago Lutheran Theological Seminary.

Moving expense, \$600.00.

1959-60 Seminary budget,

Grand View Seminary -- \$15,000.00
Grant in Aid to students -- 2,400.00

\$17,400.00

SALARY FOR SEMINARY PROFESSORS

Chicago Lutheran Seminary

Salary	\$ 6,350.00
Housing	2,400.00
Pension	1,127.00

\$ 8,877.00

A Grand Tour of Europe

There are about twenty registered for the tour of Europe sponsored by European Traveling Seminar and led by Mrs. Enok Mortensen this fall. If others are interested there is still room for about ten people. The tour includes 56 days in 11 countries. The party leaves by ship August 28 and returns by air October 22. Those wanting to spend more time in Denmark may leave earlier. The tour is planned as a sort of traveling folk school with lectures and opportunities to meet people in the various countries. More information may be obtained from Mrs. Enok Mortensen, Tyler, Minnesota.

New Church in Canada Dedicated

(Continued from Page 2)

dinners and lunches to the men, and last but not least all the people who so kindly contributed to this Church.

We had long felt the need of a Church of our own and finally our dream came true.

We give special thanks to God for his rich blessings — and to AELC, Dr. Jensen, and ministers who have contributed, visited and helped us during so many years towards this goal, so we feel you would like to share our joy with us.

All Danish families in and around Canwood will always be thankful to friends south of the border, and when the merger takes place in the near future, we feel we will be closer to you again.

Meetings of Synod Board

(Continued from Page 11)

meeting. Osage farm manager, Mr. Jens G. Thuesen sends quarterly financial statements to the trustees. A drainage tiling job is being carried out at the farm.

The college president's residence on Thompson Avenue in Des Moines is in need of more repairs. Again, the two members of the board of trustees who live in Des Moines, President Jensen and Trustee Jensen, were asked to represent the board on the matter.

Finally, five acres of land on East Sheridan Avenue in Des Moines, adjacent to the five acre athletic field, already owned by Grand View College, is being acquired in the name of the College Endowment Fund, with future expansion of the college in mind.

W. R. Garred,
Synod Secretary.

9 June 1959

Announcing Grand View Junior Camp

JULY 19-26, 1959

The twenty-first annual camp for juniors will open for boys and girls of the ages 12 through 15, on July 19, 1959.

A Typical Day

- 7:30—Day begins
- 8:00—Breakfast
- 8:30—Labor details
- 9:00—Devotions and Bible study
- 10:30—Recreation and Crafts
- 12:00—Dinner
- 12:30—Relax
- 1:30—Suit yourself, free time
- 2:30—Swimming
- 4:30—Singing
- 6:00—Supper
- 7:00—Singing games
- 8:00—Evening program (Discussions, Talks, Skits and Movies)
- 9:00—Refreshments
- 9:15—Campfire and evening devotions
- 10:15—Day ends

Meals will be served to campers beginning with supper Sunday, July 19, and ending with dinner Sunday, July 26. Campers are to bring towels, soap, swimming suits, tennis shoes and gym suits. **If you play tennis bring your racket. Do not fail to bring sheets, a pillow case and a blanket.** Also bring a New Testament, hymnal and WORLD OF SONG if possible.

Expenses

Registration	\$ 5.00
Room and board	12.50
Single meal prices75
Per day, for shorter stays (except dinner July 27, \$1.25)	
Insurance50
Total cost for one week is	\$18.50

Early enrollment assures you a place. Be sure to give your ages. Your card or letter should be in Des Moines by July 9th if possible.

Write to: Junior Camp, Grand View

College, Des Moines, Iowa. Campers are expected to abide by the camp rules.

1. The camp is open to boys and girls 12 to 15 years of age. A camper may not have reached his 16th birthday.

2. Campers may not leave the grounds without permission.

3. Campers who wish to swim must present a written permit from parents.

4. All campers clean their own rooms and in their proper turn take part in policing the grounds, and working in the dining hall and kitchen.

5. Campers must attend all sessions, unless excused.

6. The leaders reserve the right to dismiss any camper who fails to conform to the rules and regulations of the camp.

DANISH CHURCH PLANNED IN SCHLESWIG - HOLSTEIN

Kiel, West Germany — (LWF) — Plans of Danish Lutherans in this German province of Schleswig-Holstein to form a Church separate from the German territorial Church were endorsed at a South Schleswig Kirchentag in May.

Schleswig-Holstein lies just south of the Danish border, and many of its church members are of Danish language or nationality. Their 26 pastors have been holding services in more than 100 places—usually church or school buildings of the German Landeskirche, the Evangelical Lutheran Church of Schleswig-Holstein.

Participants in these services have until now remained members of the territorial Church, and an effort has been made to develop an arrangement by which the Danish work might be carried on within that Church. This however, has not proved entirely satisfactory to the two groups, and steps have therefore been initiated toward what is expected eventually to be a new free Lutheran body, "the Danish National Church in South Schleswig."

The Danish congregations in this province already have a common association or union known as the South Schleswig Synod. This body, meeting last June, voted to move toward the ultimate constitution of a legally recognized separate Church. Church taxes paid by members of such a body would then go directly to that body, instead of to the Landeskirche, as at present.

The German territorial Church is not opposing the moves in that direction. However, it is felt that before concrete action can be taken, church people must first be informed adequately about what is contemplated. The Danish synod at last year's meeting asked its council to conduct an information campaign to this end throughout the area. In this connection, the idea of a separate Danish Church was presented at the Kirchentag in May, which was an affair of the Schleswig-Holstein Danes.

DANISH PASTORS JOIN LWF AND WCC STAFFS

Geneva — (LWF) — Two Danish Lutheran pastors in May took up duties as new staff members of ecumenical organizations here — one for the Lutheran World Federation and the other for the World Council of Churches.

They are the Rev. Jens J. Thomsen of Copenhagen, who has become the WCC's secretary for assembly organization, and the Rev. Paul Hansen of Ryslinge, who is the new LWF secretary for European minority Churches.

Mr. Thomsen, 32, former secretary of the Danish Ecumenical Council and of the Danish National Committee for the LWF, is working under General Secretary Willem A. Visser 't Hooft on preparations for the World Council's next assembly, to open on Christmas 1961 in Ceylon.

Mr. Hansen, 39, who was serving a parish in Ryslinge before coming here, succeeds the Rev. Mogens V. Zeuthen, also a Dane, in the federation's office for minority Churches, which functions within the Department of World Service.

Both studied theology at the University of Copenhagen, where Mr. Hansen graduated in 1946 and his younger colleague obtained his degree in 1954. They were ordained in 1946 and 1957, respectively.

Mr. Thomsen was a Church of Denmark delegate at the federation's 1957 Assembly in Minneapolis. He was in the United States also in 1954-56, first studying theology at the University of Chicago, then serving as a YMCA secretary. He has done special studies concerning the ecumenical movement.

Mr. Hansen served as a prison chaplain and a rural church vicar before taking charge of the Ryslinge parish in 1953. He has travelled in Rumania, Bulgaria, Poland and Switzerland, as well as in Sweden and Norway. He is a board member of several Danish Christian organizations. Both are married. The new WCC official has a son, Jens Henrig, age one and a half, while Mr. Hansen has a daughter, Ida, 12, and two sons, Jorgen, 9, and Lars, 4.

Self-Interest

It is no longer safe for any one nation to put its own interest above those of any other . . . Let us determine that we will do all in our power to help every human being grow to his or her full stature . . . that we will join with every other nation in adhering to this policy, allowing at the same time full freedom to other nations to follow their own methods, however different from our own. The test of which is best is simply the welfare of the people.

Arthur Compton, Physicist

Quoted by Pearl Buck, Saturday Review

OUR CHURCH

Tyler, Minnesota. Attention is called to the "Danebod Leisure Time Workshop" to be held here July 19-25. There are rooms for 100 guests, so registrations ought to be in early. The workshop is planned and led by such leaders as Enok Mortensen, Harald Petersen, Harris Jespersen, Harry Jensen and Saralice Petersen.

North Cedar, Iowa. The Fredsville Church Bulletin notes that the new congregation at North Cedar, a home-mission project of our synod, broke ground for the erection of a chapel on June 14. It also announces that the Rev. Vagn Duus, formerly of Alden, Minn., will be the new pastor. Until the present time, services of this congregation, as well as child education, has been conducted in a public school.

Racine, Wisconsin. Our congregation here (Bethania Church) is scheduled to begin using the new order of service from the Service Book and Hymnal on June 21. The new hymnals will be dedicated on that day, as well. The Sunday School will continue to use the old hymnals. Vacation Bible School is held here during two weeks of June.

Kenosha, Wisconsin. Pastor Lawrence Siersbeck, sometime preacher in Danish for the Racine congregation, has been awarded an honorary L.H.D., Doctor of Humane Letters, by Dana College. Pastor Siersbeck is former college president at Dana. Dana will soon begin construction of a new \$336,000 women's dormitory.

Marlette, Michigan. Pastors Harry Andersen and James Lund, of our congregation in this community, as well as laymen of the church, conducted a

religious survey of the section of the state for which Marlette is the geographical center. The survey covered 64 square miles of territory, and the tabulated results distributed to the churches within the area.

Hartford, Connecticut. An "Open House" farewell at the parsonage here is planned for Pastor and Mrs. Viggo Hansen, on June 24. Late this month, the Hansens are leaving their Bridgeport, Conn., congregation for California.

Newark, New Jersey. On Sunday, June 7th, District President Holger O. Nielsen, of Hartford, Conn., installed Mr. Don Baron as licensed pastor of our church here. He is a graduate of Luther Theological Seminary, St. Paul, Minn., and will study for a couple of years at Yale in the field of Far Eastern Languages. The correspondent writes: The church at Newark has a vacancy so we of District One feel fortunate in getting so well-trained a man as Mr. Don Baron. We extend to him a hearty welcome among us.

Scholarship Fund

(Continued from Page 9)

stance, and a modified form of deaconess work is again attracting young women to this field. The new church will also have many mission fields, will be able to use young women as

parish workers, and as religious education directors. But the point I wish to stress here is that if we consider only our synod, we have limitations we cannot set aside.

I had a thought the other day which I have not as yet communicated to the other members of the committee. It is that we suggest that this be a named scholarship.

Here are some questions I asked the committee members to think about. Since the recipient can only be granted this scholarship provided he or she goes into some phase of Christian service, should not he or she whenever possible, be asked to attend a Lutheran or other Christian College? Might we consider giving the scholarship to one person for two years? Who would serve on the scholarship committee to interview possible candidates, and process applications?

Has this presentation given you something to think about? If you have ideas, suggestions, criticisms or comments, will you please jot them down and send them to me? I hesitate to ask you to send them to OUR WOMEN'S WORK since convention time is not too far away, and the committee must set up rules for presentation this August.

Mrs. Ernest D. Nielsen
918 Thompson Avenue
Des Moines 16, Iowa.

New England Camps

Rev. Ove R. Nielsen, Mr. Carmon Christensen and Rev. Holger O. Nielsen, all of District One AELC, met with representatives from the Augustana Lutheran Church and the Suomi Synod of the New England Conferences May 23 at Camp Lutherwood, Webster, Massachusetts.

A study of camp locations was made and locations are as follows: Camp Suomi near Plymouth, Mass., Lutherwood of Augustana near Webster, Mass., AELC Dist. I Camp near Hartford, Conn., and ULCA none.

Arrangements were made with Lutherwood so the Sunday school chil-

dren and young people from District I may attend this camp under the same conditions and costs as the children and young people from the New England Conference of the Augustana churches.

At the close of the camp season of 1959 the present plan is to sell Lutherwood and buy a larger camp near Calumet, New Hampshire at a cost of \$120,000. This new camp is considered one of the finest and best equipped camps in the country. With this camp moving farther north it gives added importance to the 27-acre camp of wooded hills which belong to District I.

New England Correspondent.

Camping Schedule 1959

District I

Date	Group	Registration Fee	Room & Board	Total
June 28-July 4	Girls Age 8-12	\$5.00	\$20.50	\$25.50
July 5-July 11		per week		per week
July 12-July 18				
July 19-July 25	Boys Age 8-12	\$5.00	\$20.50	\$25.50
July 26-Aug. 1		per week		per week
Aug. 2-Aug. 8	Jr. & Sr. Confirmation	\$5.00	\$20.50	\$25.50
	Youth Age 13-15	per week		per week
Aug. 9-Aug. 15	Leadership Training	\$5.00 Includes Kit	\$22.00	\$27.00
	Confirmed Youth	\$5.00 Includes Kit		\$27.00
Aug. 16-Aug. 22				

The camp week begins at 3 p. m. on Sunday

NEW ADDRESS—If you move, then write your name and new address in the space provided. Be sure to state what congregation you belong to. Clip this out so that the old address is included and mail to LUTHERAN TIDINGS, Askov, Minnesota.

June 20, 1959

I am a member of the congregation at _____

Name _____

New Address _____

City _____ State _____

PETERSEN, ANDREW K.
TYLER, MINN.
6-4